

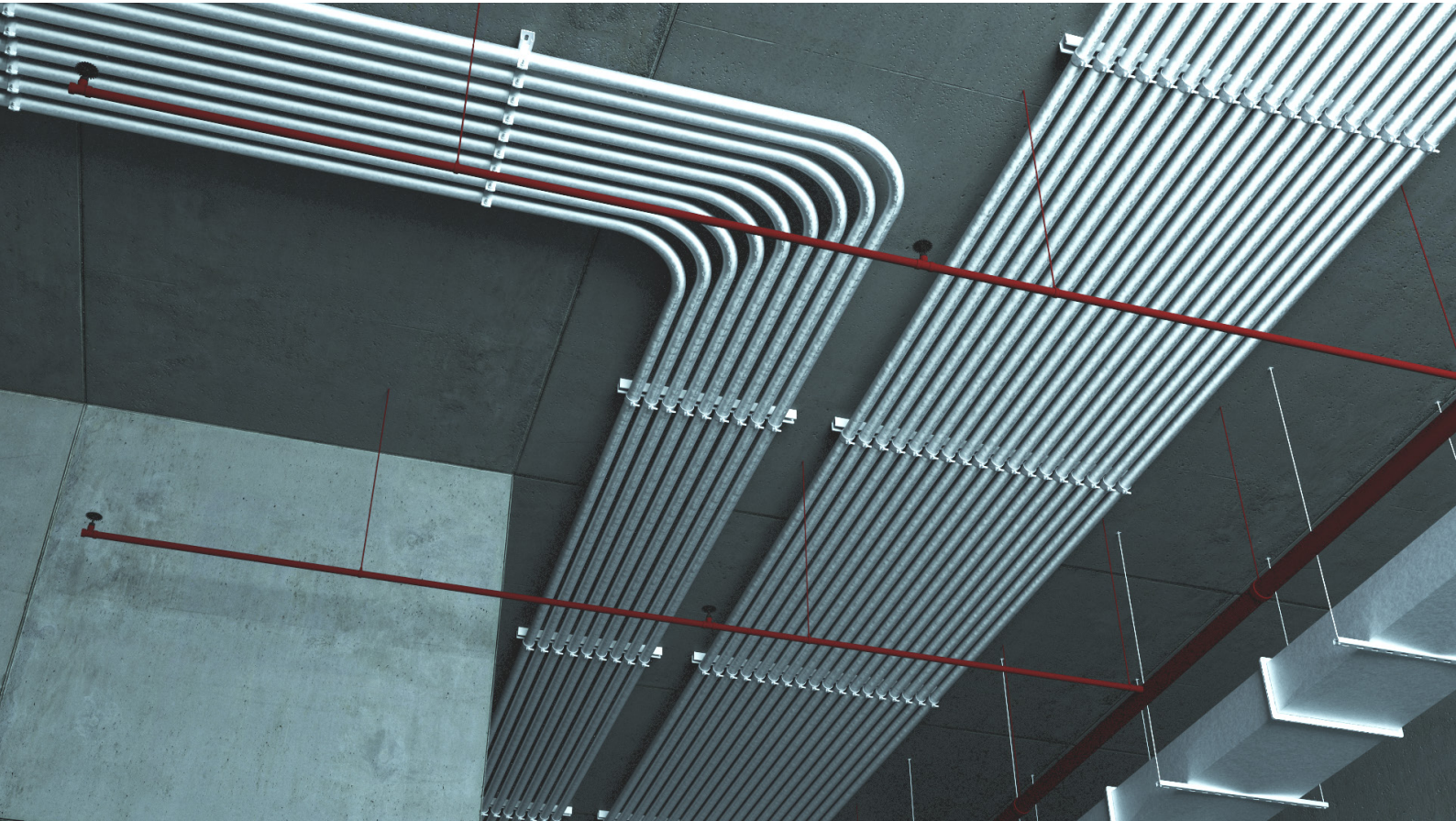
# *MC Cable in wavy basket systems*



*Save money on  
your installations*

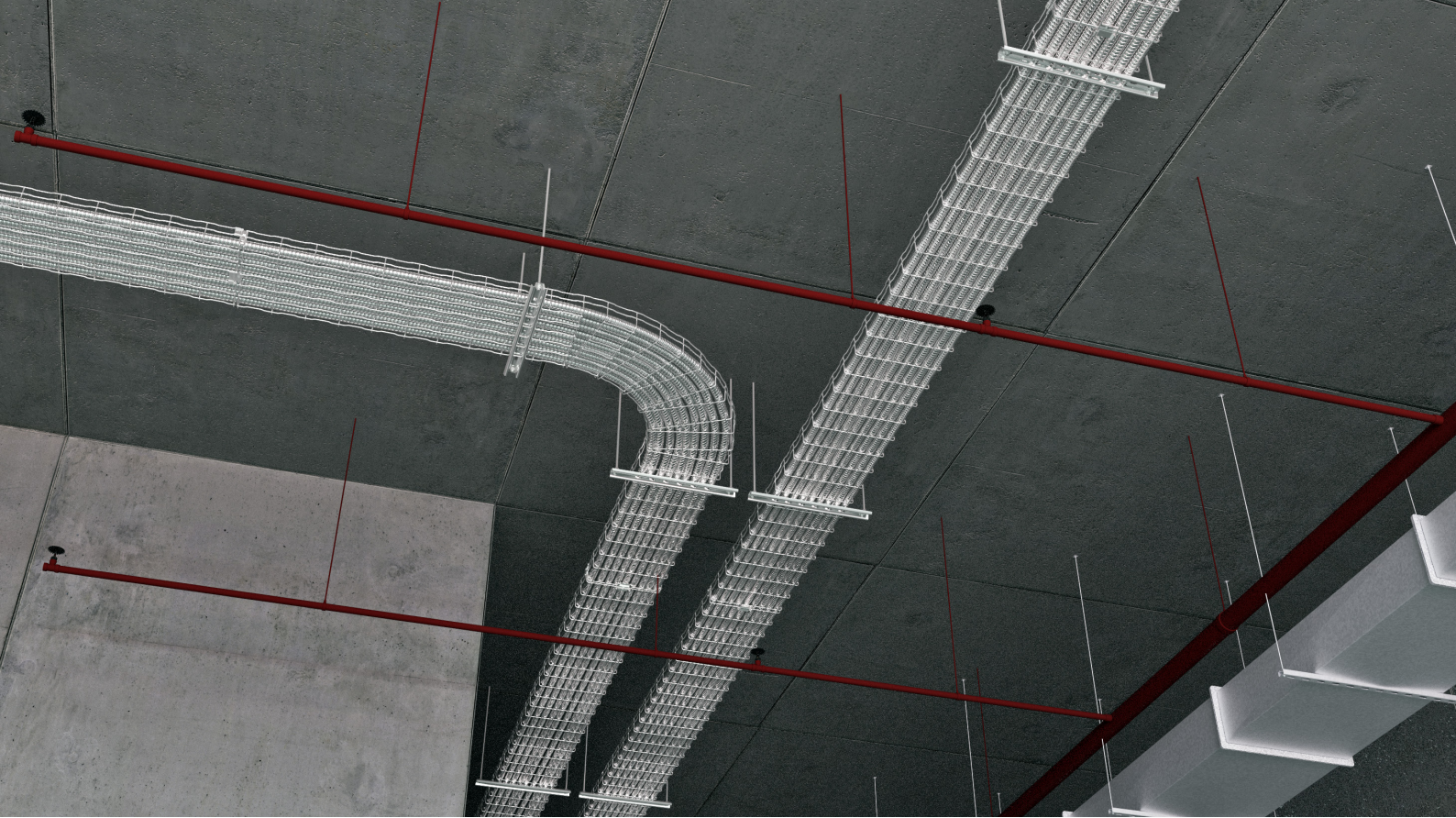
**3E Basor**  
CABLE TRAY SPECIALIST

## **1. Traditional conduit installations: Some aspects**



- 1. Conduit is Labor and material Intensive**
- 2. Specialized tools and experience are required**
- 3. Cables need to be derated**
- 4. Large deadlines**
- 5. Cable Installation requires difficult and stressful pulling of wires**
- 6. "Design" responsibility is becoming the responsibility of the electrical contractor**
- 7. Non space efficient**
- 8. Fixing to supports is not fast**
- 9. Bend constructions are difficult and expensive**
- 10. Installation maintenance more complicated**
- 11. Difficulties in future extensions**

## *2. MC Cable in wavy basket trays: Some aspects*



**Cable basket tray shall be permitted to be used as a support system for service conductors, feeders, branch circuits, communications circuits, control circuits, and signaling circuits. Cable tray installations shall not be limited to industrial establishments.**

- 1. Basorfil installs at least 40% faster**
- 2. Simple tool and snaps together**
- 3. Open air design: Ventilated; no derated needed**
- 4. Easy installation to the supports: initial and future**
- 5. Multiple pulling wire**
- 6. Space efficient**
- 7. Future extensions easy to install**
- 8. Easy and fast in the construction of bends**

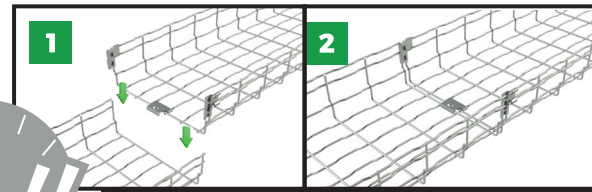
**3. Basorfil installs at least 40% faster**

**basorfil** *BF2R*

**BASKET TRAY  
SELF-SPLICING**  
No bolts or nuts needed

**2 STEPS** INSTALLATION

**COATINGS**  
Electrozinc  
Electrozinc EZ1000  
Stainless Steel 304, 316L  
Painted (Black, red, white...)



Twelve 1" Conduits equals One 12x2 Basor Tray



2 minutes



8 minutes

**4. Easy installation to the supports**



12 clamps are needed for the installation of 12 conduits of 1"



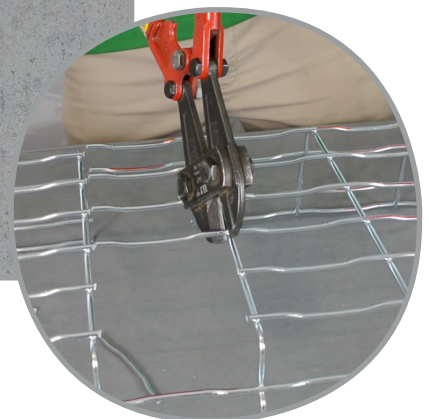
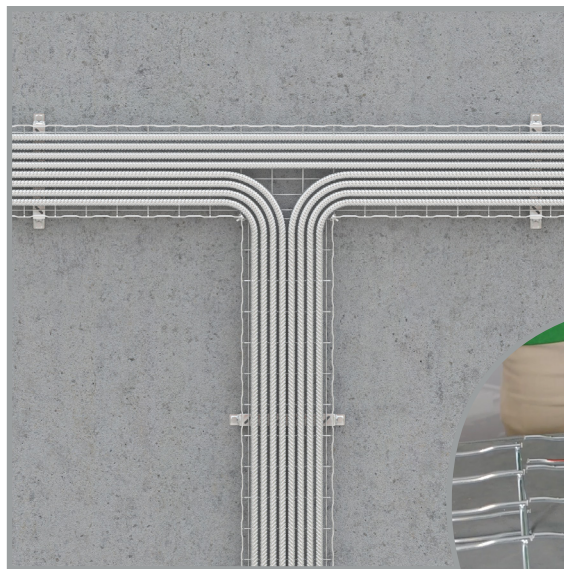
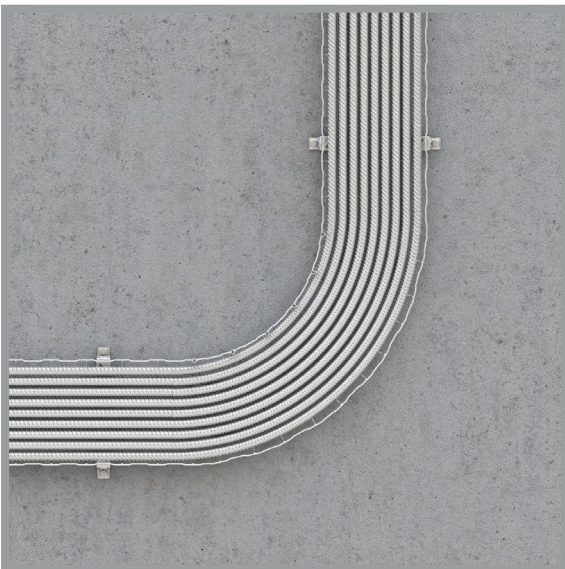
2 clip fil are needed for 1 basket tray of 12x2"



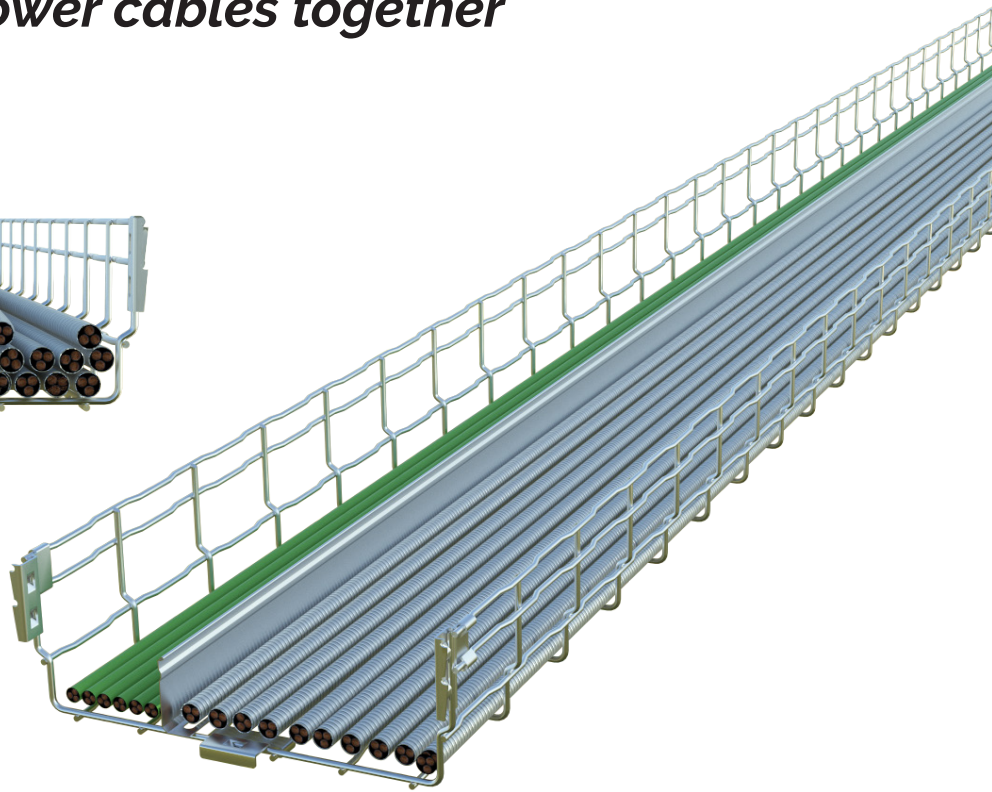
## *5. Different support solutions*



## *6. Easy and fast in the bend constructions*



## *7. Data and Power cables together*

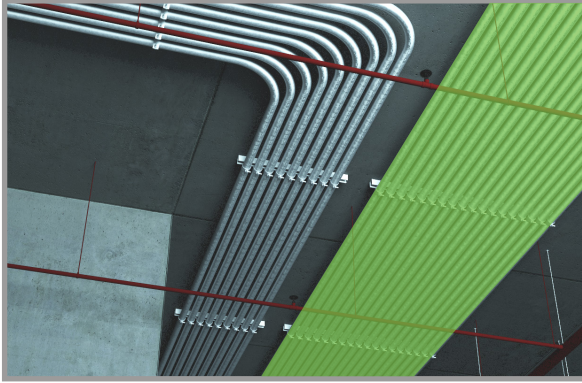


## *8. Multiple pulling wire*

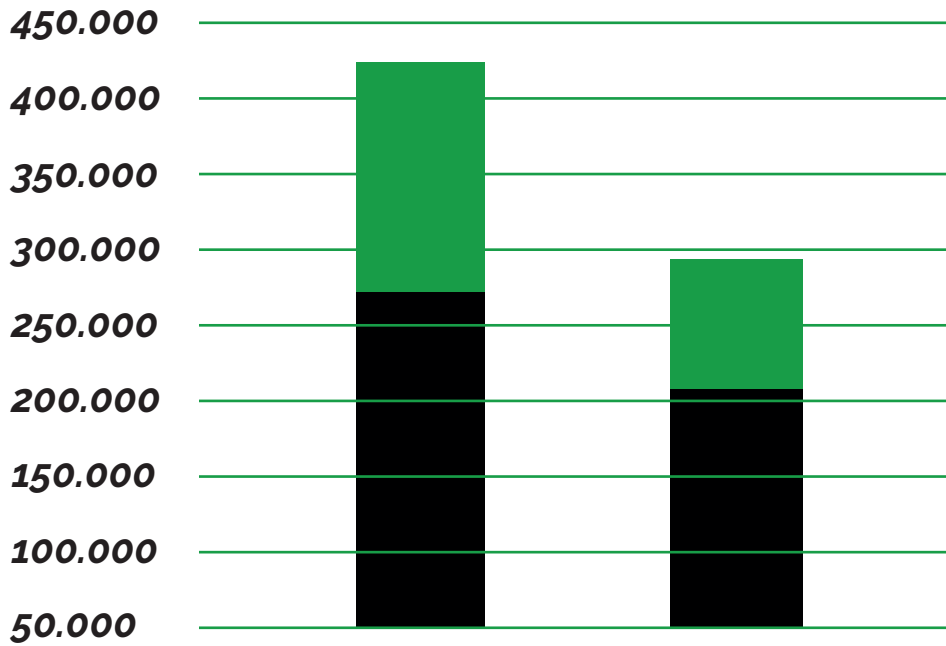


Save  
money  
and  
time

## 9. Space efficient

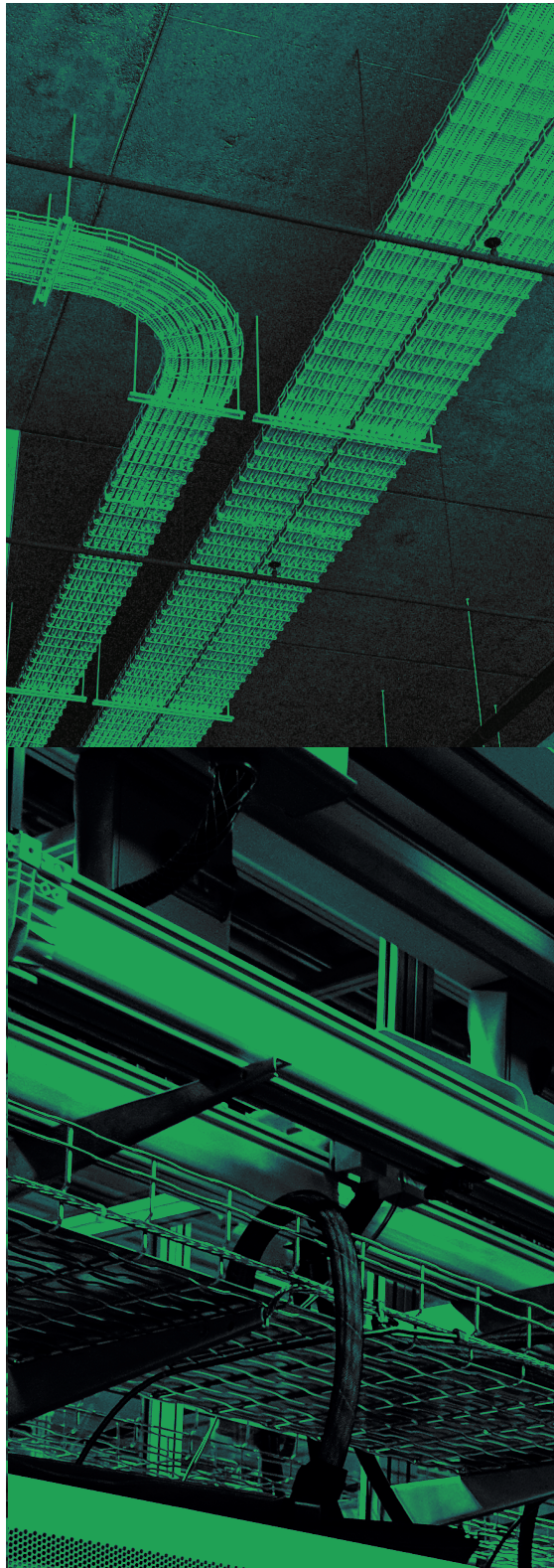


## 10. Costs



■ Material  
■ Labor

REDUCTION IN LABOR	REDUCTION IN MATERIAL	TOTAL
MC IN WIRE MESH TRAY	MC IN WIRE MESH TRAY	REDUCTION
36%	15%	30%



**BE Basor**  
CABLE TRAY SPECIALIST

Basor Electric Inc.  
609 South Breese Street • Suite 100  
Milstadt, IL 62260

Tel. 618.476.6300 • Fax 618.476.6301 • Toll Free 844.393.3985

[basor.us](http://basor.us)  
[basor.com](http://basor.com)